

Skeletal Fluorosis2

"Clinical Phase 1 Fluorosis: Sporadic pain; stiffness of joints..."

Clinical Phase 2 Fluorosis: Chronic joint pain; arthritic symptoms; slight calcification of ligaments..."

Source: Department of Health and Human Services. (1991). Review of fluoride: benefits and risks. Report of the Ad Hoc Subcommittee on Fluoride. Washington, DC.

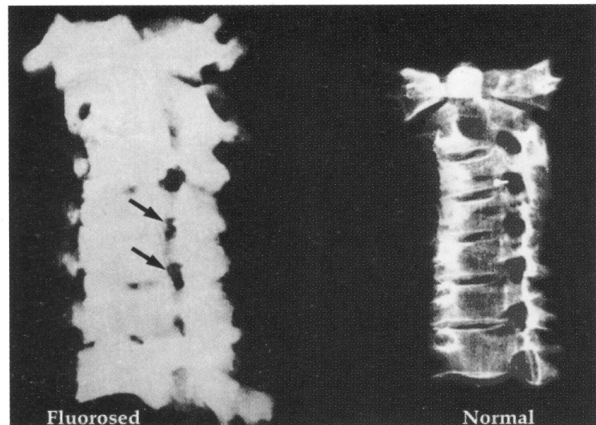
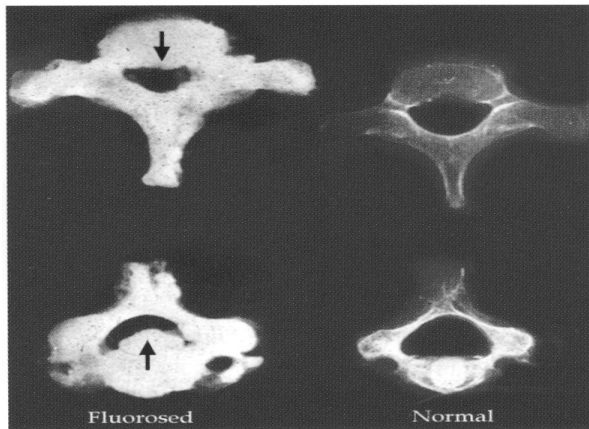


Normal forearm X-ray showing smooth outer and inner surfaces of the bone. Forearm X-ray of a patient showing increase in bone density and calcification of the interosseous membrane.

EPA 2003 Annual Report

"increasing numbers of people with carpal-tunnel syndrome, arthritic-like pains, osteoporosis may be due to the mass fluoridation of drinking water.

showing increase in bone density and calcification of the interosseous membrane due to over-exposure of fluoride. Journal of the International Society for Fluoride Research: <http://www.fluorideresearch.org/forearm/files/forearm.pdf>



Source: Prof. (Dr.) A.K. Susheela, F.A.Sc., F.A.M.S. Ashoka Fellow Executive Director, Fluorosis Research

2 segments of vertebral column from human fluorosed and normal showing construction of intervertebral foramen

2 vertebrae showing narrowing of vertebral can and increase in size of body in fluorosed vertebrae

Given the lack of training western doctors receive on fluorosis disease, it is plausible that early stages of the condition (including pain and stiffness) are being misdiagnosed as arthritis in artificially fluoridated areas. The causes of most forms of arthritis (e.g. osteoarthritis) are unknown.