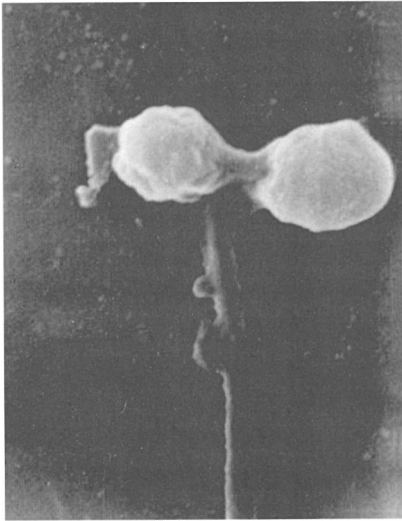


Sperm Abnormality in Fluorosis

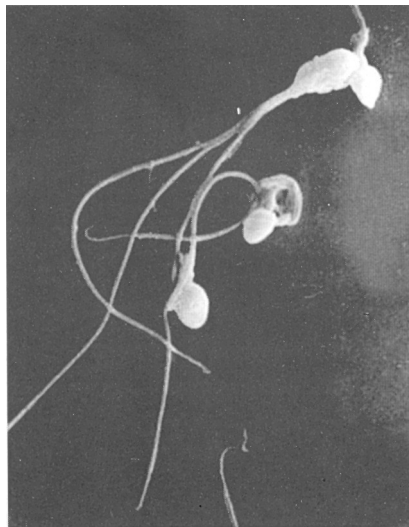
From: Dr. A.K. Susheela: A treatise on Fluorosis



Double-Headed Sperm from Infertile Male consuming excess fluoride

Lowered Testosterone levels (nmol/L) from excess fluoride:

- Sample (30): 16.1 ± 8.8
- Control (26): 24.8 ± 5.6



Male infertility from excess fluoride due to:

- abnormal sperm shape
- abnormal sperm number
- abnormal sperm motility
- abnormal sperm fertilizing ability

Multiple and Coiled Sperm Tail from Infertile Male consuming excess fluoride